



Christ Church C of E Junior School Newsletter 13

Friday 8th December 2023

This week our Collective
Worship theme was:

Advent



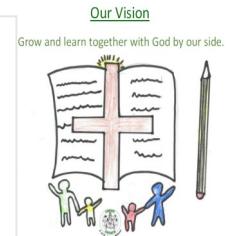
Writer of the Week

Year 3-Mehrveer Ghuman

Year 4-Jasper Leek-Masters

Year 5- Amitha Cherukuri

Year 6-Wanda Freshwater



Dhiren Kambo has won the **Golden Jacket** this week!

Look out for Dhiren in the Golden Jacket around school next week!

Who could be wearing the jacket with pride next?

Spellings

Children will be receiving a spelling shed login. When you have your login, spelling games can be found via the link below:

https://www.edshed.com/en-gb/login?return_url=https%3A%2F%2Fwww.spellingshed.com%2Fen-gb

For week beginning Monday 11th December children will complete list 113 for their year groups.

Spellings can also be found at:

<https://www.christchurchfederation.co.uk/junior-curriculum-maps>



School Dinners

Next week back will be week 3

School dinners are £2.60 per day which is payable on School Gateway. If your child would like a school dinner, they can order one daily. All they need to do is inform their class teacher during the dinner register.

All meals are freshly prepared on site and there is always the choice of jacket potatoes or sandwiches if your child does not like the main menu option that day.

Congratulations Mrs Beason!



A huge congratulations to Mrs Beason who received her award for 25 years service this week. Mrs Beason has taught over 750 children during her career so far! Thank you for being you Mrs Beason, all the children love you!

Dates for your Diary (new information in bold)

In order to make it easy for parents to find the information needed. Diary dates will be on the newsletter every week. Any new additions/ amendments are in bold to make them easy to identify and add to your diary.



Monday 11th December– Film Night. 5.30pm end. Film– Elemental

Wednesday 13th December– Christmas Dinner in school (no sandwiches or jackets available)

<https://forms.office.com/e/Oiu1bRiZgM>

Wednesday 13th December– ‘Selfie with an Elfie’ competition closes

Friday 16th December– Year 6 STEM Workshop in school

Tuesday 19th December– Church Service– Parents invited to attend. 9.30am

Thursday 21st December– Church service 2.00pm. Parents invited to attend.– Please note– **The date of the church service has changed**

~~Thursday 21st December – Break up for Christmas~~

Thursday 21st December– Christmas Jumper Day

Thursday 21st December Leaf Assembly– 9.30am lower school 10.00am upper school

Your child’s teacher will inform you if your child is receiving a leaf.

Friday 22nd December– INSET DAY

Monday 8th January– School reopens

Tuesday 9th January– Consultation period on the proposed new school day closes.

Wednesday 10th January– Year 6 London Trip

Friday 12th January– Individual photos

Friday 12th January– Year 6 social media workshop with PC Brittle

Thursday 9th– Friday 10th May 2024– Year 4 residential trip to Kingswood.

Leaf Assembly

Leaf assembly will be taking place on Thursday 21st December. Parents will be informed by class teachers if your child will be receiving a leaf. Parents are welcome to attend.

Christmas Lunch

On **Wednesday** 13th December we will be serving a Christmas lunch at school. There will be no other meal options on this day. Please complete the form below if your child would like to have a Christmas lunch. The menu is attached to the bottom of the newsletter.

<https://forms.office.com/e/Oiu1bRiZgM>



Year 3 Creative Church



Thank you to everyone who attended Year 3 Creative Church this week. The art work look fabulous and is now displayed in church for the whole community to enjoy.

Creative Church Artwork.



Thought of the Week

Theme- Advent

Joseph also went up from Galilee, out of the city of Nazareth, into Judea, to the city of David, which is called Bethlehem, because he was of the house and lineage of David, to be registered with Mary, his betrothed wife, who was with child. LUKE 2:4-5



SEN Opportunities!



Please click on the link for the new eBulletin form Wolverhampton IASS. Lots of parent workshops, activities and cinema/theatre news. These include- parent workshops run by CAMHS, Sensory Saturdays at The Way and so much more.



Wolverhampton Information, Advice and Support Service
For special educational needs and disabilities from birth - 25 years



www.wolvesiass.org



The Way Youth Zone: Sensory Saturdays



Sensory Saturdays
SEND Families
10am - 12:30pm

Weekly themed activities in a calm, relaxed setting

- Sensory room
- Climbing wall
- Parachute games
- Music
- Arts and crafts
- Board games & lego
- Soft play
- Cafe

50p per person
All ages welcome, accompanied by an adult

The Way Youth Zone
School Street, Wolverhampton WV3 0NR
www.thewayyouthzone.org
Registered Charity Number 1151247



Every Saturday The Way Youth Zone offers its SEND Families access to weekly themed activities and sensory room.

Enjoy soft play, arts and crafts, board games and Lego, climbing wall and parachute games.

Find out more [here](#).

The Santa Dash!



Sports Fixtures

Please find below the sports fixtures which have been organized for this year. New additions will always be in bold. A Microsoft form will come out to you before the event to confirm attendance and arrangements. Only children who are playing in that particular match will receive the form. I try, where possible to get this information to parents a minimum of a week before the fixture.

Mixed Football

Warstones- TBC

St Anthony's- TBC

Netball

15/01/23- The Royal- Away

19/02/23- Wolverhampton Grammar School- Away

Girls' Football

Woodthorne- TBC

15/01/23- The Royal- Away



Choir, Recorders and Cake!

Thank you to our wonderful choir and recorder groups who really helped to get us into the Christmas mood this week by entertaining us all during our cake sale! We made an extra £40 which will be added to the total made at the Christmas Fair!



Thank you to Mr Gray for going over and above to provide so many fabulous opportunities for our children.

Changes to the School Day from September 2024

Please see the letter via the link below which consults families on the proposed changes to the school day for September 2024.

Your views are welcomed and will form an important part of the consultation process.

<https://www.christchurchfederation.co.uk/post/changes-to-the-times-of-the-school-day>

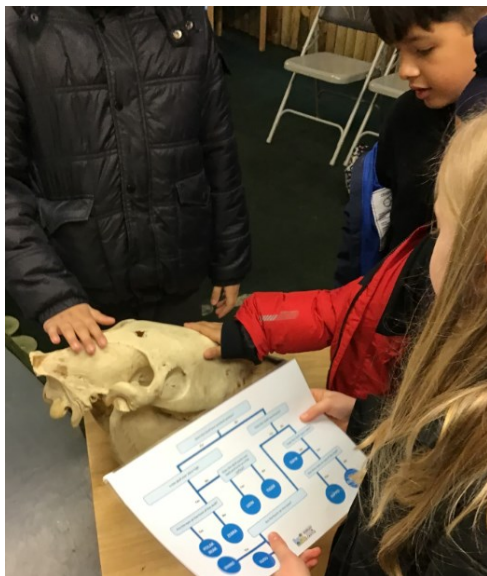
Year 5 trip to Safeside

Year 5 had a fantastic trip to Safeside this week. It was very interesting and taught the children some valuable lessons. Thank you to Miss Cox for organising the trip.



Year 3 Trip to Dudley Zoo

Year 3 enjoyed a great day out, the children were all wrapped up warm and had a great day despite the rain! Thank you to Mrs Beason and Miss Charlesworth for planning the trip.





There's still time to enter our 'Selfie with an Elfie' competition.

You could take a photo of yourself and your elf trying out an experiment, visiting a science museum or with an interesting find.

Remember, you can post your photo onto Instagram or send them into school for judging by Wednesday 13th December. Thank you for all of the entries so far!



Stuck for ideas? Here's some Christmas inspiration!



You will need:

- Sheet of card or paper plate
- Metal Paperclip
- Pens
- Magnet

- Draw and cut out small Santa
- Attach paper clip to Santa
- Draw a maze on the card or paper plate
- Stand the santa on the maze
- Use a magnet underneath the maze to move the Santa about
- Why does the magnet cause the paperclip to move?

- Fill a jar or glass $\frac{1}{2}$ full with water
- Add a thin layer of cooking oil
- Add drops of food colouring



The oil is less dense than the water so it floats on top. The water is hydrophobic so it doesn't mix with the water. The food colouring is water soluble, so when it sinks through the oil, it mixes once it hits the water, spreading out in gorgeous patterns!

The real Northern (or Southern) lights, or Aurora polaris, are in fact a natural light display, predominantly seen around the Arctic and Antarctic. Auroras are the result of disturbances in the magnetosphere caused by solar wind.



You will need:

- Milk
- Saucepan
- Sieve
- Cloth
- Paper towel
- Mould or cookie cutters

- Add vinegar to hot milk
- Allow to cool slightly before passing through a sieve lined with a cloth
- Once the liquid has all dripped through and it has cooled, squeeze the remaining liquid out through the cloth
- Place on paper towel to dry further
- Shape like playdough and put into moulds or cookie cutter shapes and allow to dry for a couple of days



- Fill a jar or glass $\frac{1}{2}$ full with milk and water
- Add a deep layer of cooking oil
- Add small bits of fizzy vitamin tablet

The oil floats on the surface as it is less dense than the milk/water and the liquids do not mix. When you add small pieces of fizzy vitamin tablet (or sodium bicarbonate and citric acid) a chemical reaction releases bubbles of carbon dioxide and carries blobs of liquid through the layers.

You can also make a lava lamp using vinegar and food colouring and add a few sprinkles of sodium bicarbonate to the surface of the oil.

Shine a torch to make the effect even more magical!

"READING IS A PASSPORT
TO COUNTLESS ADVENTURES."
- NEIL GAIMAN



**LIBRARY IS OPEN AFTER
SCHOOL THURSDAYS UNTIL 4PM
MRS WALKER WOULD LOVE TO
SEE YOU AND YOUR FAMILY**

FIRST VISIT

COLLECT YOUR BOOKMARK AND YOUR FIRST STICKER

GET A STICKER EVERY VISIT

EVERY 7 STICKERS YOU RECEIVE YOU GET A PRIZE.



THE WORLD
belongs
to
THOSE WHO
read

WISHING YOU A VERY **MERRY CHRISTMAS!**



Wednesday 13th December

**Roast Turkey
With Stuffing & Gravy**

Or

**Roast Quorn Fillet
With Stuffing & Gravy**

Served With

Roast Potatoes, Peas, Carrots and Sprouts

Chocolate Crispy Christmas Puddings

Or

Festive Shortbread





Week One Menu

	MONDAY	TUESDAY	WEDNESDAY	THURSDAY	FRIDAY
MAIN MEAL	PORK SAUSAGE WITH MASHED POTATO & GRAVY	HOMEMADE BEEF LASAGNE WITH HERBY DICED POTATOES	ROAST CHICKEN WITH ROAST POTATOES & GRAVY	MILD BEEF CHILLI CON CARNE WITH FLUFFY RICE	FISH FINGERS & CHIPS
VEGETARIAN	VEGAN QUORN CUMBERLAND SAUSAGE, MASH & GRAVY	VEGETARIAN LASAGNE WITH HERBY DICED POTATOES	CAULIFLOWER & BROCCOLI CHEESE BAKE WITH ROAST POTATOES	VEGETABLE ENCHILLADA WITH FLUFFY RICE	CHEESE & TOMATO PIZZA & CHIPS
JACKET / DELI OFFER	JACKET POTATO Grated Cheese, Baked Beans or Tuna Mayo DELI OFFER Cheese, Egg Mayo, Tuna Mayo or Ham	JACKET POTATO Grated Cheese, Baked Beans or Tuna Mayo DELI OFFER Cheese, Egg Mayo, Tuna Mayo or Ham	JACKET POTATO Grated Cheese, Baked Beans or Tuna Mayo DELI OFFER Cheese, Egg Mayo, Tuna Mayo or Ham	JACKET POTATO Grated Cheese, Baked Beans or Tuna Mayo DELI OFFER Cheese, Egg Mayo, Tuna Mayo or Ham	JACKET POTATO Grated Cheese, Baked Beans or Tuna Mayo DELI OFFER Cheese, Egg Mayo, Tuna Mayo or Ham
SEASONAL VEGETABLES	PEAS OR COLSLAW	SWEETCORN OR MIXED GREEN SALAD	GREEN BEANS OR CARROTS	BROCCOLI OR SWEETCORN	GARDEN PEAS OR BAKED BEANS
DESSERTS	LEMON SPONGE & CUSTARD	SHORTBREAD FINGER WITH FRUIT WEDGES	ICED CHOCOLATE SPONGE	APPLE CRUMBLE & CUSTARD	FRESH FRUIT SELECTION

AVAILABLE DAILY Bread Basket, Fresh Salad Bar, Water, Seasonal Fresh Fruit, Yoghurt & Jelly.



Week Two Menu

	MONDAY	TUESDAY	WEDNESDAY	THURSDAY	FRIDAY
MAIN MEAL	BEEF BURGER IN A BUN WITH 1/2 JACKET POTATO	BBQ CHICKEN & FLUFFY RICE	ROAST TURKEY ROAST POTATOES & GRAVY	CHICKEN WRAP WITH POTATO WEDGES	FISH FINGERS & CHIPS
VEGETARIAN	CHEESE & TOMATO PINWHEEL WITH 1/2 JACKET POTATO	VEGETABLE BIRIYANI	VEGAN QUORN CUMBERLAND SAUSAGE, ROAST POTATOES & GRAVY	MARGHERITA PIZZAS WITH POTATO WEDGES	BBQ VEGETABLE & BEAN WRAP & CHIPS
JACKET / DELI OFFER	JACKET POTATO Grated Cheese, Baked Beans or Tuna Mayo DELI OFFER Cheese, Egg Mayo, Tuna Mayo or Ham	JACKET POTATO Grated Cheese, Baked Beans or Tuna Mayo DELI OFFER Cheese, Egg Mayo, Tuna Mayo or Ham	JACKET POTATO Grated Cheese, Baked Beans or Tuna Mayo DELI OFFER Cheese, Egg Mayo, Tuna Mayo or Ham	JACKET POTATO Grated Cheese, Baked Beans or Tuna Mayo DELI OFFER Cheese, Egg Mayo, Tuna Mayo or Ham	JACKET POTATO Grated Cheese, Baked Beans or Salmon Mayo DELI OFFER Cheese, Egg Mayo, Tuna Mayo or Ham
SEASONAL VEGETABLES	FRESH SALAD OR COLSLAW	PEAS OR BROCCOLI	GREEN BEANS OR CARROTS	SWEETCORN OR FRESH SALAD	GARDEN PEAS OR BAKED BEANS
DESSERTS	JAM SPONGE & CUSTARD	MINI SULTANA COOKIE WITH FRUIT SLICES	PINEAPPLE UPSIDE DOWN CAKE & CUSTARD	CHOCOLATE BROWNIE	FRESH FRUIT SELECTION

AVAILABLE DAILY: Bread Basket, Fresh Salad Bar, Water, Seasonal Fresh Fruit, Yoghurt & Jelly.



Week Three Menu

	MONDAY	TUESDAY	WEDNESDAY	THURSDAY	FRIDAY
MAIN MEAL	HAM PIZZA WITH 1/2 JACKET POTATO	MEXICAN CHICKEN WITH FLUFFY RICE	TOAD IN THE HOLE WITH CREAMY MASH & GRAVY	BEEF BOLOGNAISE WITH WHOLEMEAL PASTA	FISH FINGERS & CHIPS
VEGETARIAN	MIXED BEAN FAJITA WITH 1/2 JACKET POTATO	MACARONI CHEESE WITH WARM BAGUETTE	VEGETABLE MINCE COBBLER WITH CREAMY MASH & GRAVY	VEGETARIAN CHILLI WITH FLUFFY RICE	VEGETABLE FINGERS & CHIPS
JACKET / DELI OFFER	JACKET POTATO Grated Cheese, Baked Beans or Tuna Mayo DELI OFFER Cheese, Egg Mayo, Tuna Mayo or Ham	JACKET POTATO Grated Cheese, Baked Beans or Tuna Mayo DELI OFFER Cheese, Egg Mayo, Tuna Mayo or Ham	JACKET POTATO Grated Cheese, Baked Beans or Tuna Mayo DELI OFFER Cheese, Egg Mayo, Tuna Mayo or Ham	JACKET POTATO Grated Cheese, Baked Beans or Tuna Mayo DELI OFFER Cheese, Egg Mayo, Tuna Mayo or Ham	JACKET POTATO Grated Cheese, Baked Beans or Tuna Mayo DELI OFFER Cheese, Egg Mayo, Tuna Mayo or Ham
SEASONAL VEGETABLE	FRESH SALAD OR COLSLAW	PEAS OR BROCCOLI	CARROTS OR GREEN BEANS	SWEETCORN OR BROCCOLI	GARDEN PEAS OR BAKED BEANS
DESSERTS	SHORTBREAD BISCUIT	CHOCOLATE SPONGE & CUSTARD	BANANA TRATBAKE	CHOCOLATE COOKIE	FRESH FRUIT SELECTION

AVAILABLE DAILY: Breadbasket, Fresh Salad Bar, Water, Seasonal Fresh Fruit, Yoghurt & Jelly.