



Christ Church C of E Junior School Newsletter 6

Friday 13th October 2023

This week our Collective
Worship theme was:

Harvest



Writer of the Week

Year 3- Jonah Holden

Year 4- Hawa Ali

Year 5- Henry Walker

Year 6- Harj Singh

Our Vision

Grow and learn together with God by our side.



Jayden Moothien has won the **Golden Jacket** this week!

Look out for Jayden in the Golden Jacket around school next week!

Spellings

Children will be receiving a spelling shed login. When you have your login, spelling games can be found via the link below:

https://www.edshed.com/en-gb/login?return_url=https%3A%2F%2Fwww.spellingshed.com%2Fen-gb

For week beginning Monday 16th October children will complete list 6 for their year groups.

Spellings can also be found at:

<https://www.christchurchfederation.co.uk/junior-curriculum-maps>



School Dinners

Next week back will be week 1

School dinners are £2.60 per day which is payable on School Gateway. If your child would like a school dinner, they can order one daily. All they need to do is inform their class teacher during the dinner register.

All meals are freshly prepared on site and there is always the choice of jacket potatoes or sandwiches if your child does not like the main menu option that day.

Dates for your Diary (new information in bold)

In order to make it easy for parents to find the information needed. Diary dates will be on the newsletter every week. Any new additions/ amendments are in bold to make them easy to identify and add to your diary.



16th and 17th October -Parents' Evening– **All appointments will be sent out by 4.00pm today.**

Monday 16th October and Tuesday 17th October– Book fair after school in the Junior hall.

Wednesday 18th October– Year 3 Parent Lunch

<https://forms.office.com/e/tsQhkGS3mF>

Friday 20th October– Flu Vaccine in School. Consent must be given via the link . [Vaccination UK Immunisation \(schoolvaccination.uk\)](https://www.schoolvaccination.uk)

Monday 23rd October– Kingswood year 4 Residential Parents meeting 3.25pm in the hall.

Wednesday 25th October– Year 4 Parent Lunch

<https://forms.office.com/e/AftNH8pam>

Monday 6th November– INSET DAY

Tuesday 7th November– Special menu for Bonfire night.

Tuesday 7th November– Year 6 gangs workshop– Permission required <https://forms.office.com/e/PcMQknHxQn>

Monday 13th November– Diwali Day– Bright coloured clothes or traditional dress.

Monday 13th November– Special dinner menu for Diwali

Wednesday 22nd November– Year 5 parent lunch

<https://forms.office.com/e/vR9iAXTyeZ>

Wednesday 22nd November– Year 5 gangs workshop- Permission required- <https://forms.office.com/e/PcMQknHxQn>

Wednesday 29th November– Year 6 parent lunch

<https://forms.office.com/e/K736tJr95j>

Thursday 30th November– Year 4 Creative Church in the Junior hall- 1.30pm- Form to follow

Friday 1st December– Christmas Fair

Sunday 3rd December– Santa Dash– West Park

Monday 4th December– Year 3 trip to Dudley Zoo

<https://forms.office.com/e/KDGVeafW1F>

Thursday 7th December Year 3 Creative Church in the Junior hall- 1.30pm- Form to follow

Wednesday 13th December– Christmas Dinner in school (no sandwiches or jackets available)

Friday 16th December– Year 6 STEM Workshop in school

Thursday 21st December– Church service 2.00pm. Parents invited to attend.

Thursday 21st December– Break up for Christmas

Thursday 21st December– Christmas Jumper Day

Friday 22nd December– INSET DAY

Monday 8th January– School reopens

Friday 12th January– Individual photos

Thursday 9th– Friday 10th May 2024– Year 4 residential trip to Kingswood.

Flu Vaccine

Flu Vaccine's will be given in school on 20th October. In order to receive the vaccine, you must complete the consent via the link below:

[Vaccination UK Immunisation \(schoolvaccination.uk\)](http://schoolvaccination.uk)

If you do not wish your child to have the vaccine, the link must be used to withdraw consent.

Parents Evening Appointments

All appointments will be sent out by 4.00pm today. Unfortunately, some people submitted the form with no name. If you do not receive an appointment by this evening, this will be why. If this is the case, please do not worry. Please call the office on Monday and Mrs Hegarty will find an available appointment for you.

Appointments will take place in classrooms and your child's books will be available to view before or after your appointment.

Harvest

Thank you for all the wonderful donations for the Friends of the Good Shepherd. The donations were collected on Tuesday and were gratefully received.



Harvest Lunch!

Thank you to Sarah our wonderful cook for providing a delicious Harvest lunch for the children!



Supporting Beacon for the Blind

Bright for Sight Day!

This week we raised £175 for 'Beacon for the Blind!' Thank you for all your kind donations! The charity, which is very local to us, does fantastic work to support people with visual impairments. Their vision is to create a society where individuals value and protect their sight and where visual impairment does not limit or determine opportunity. We are proud to support them on this mission.



Santa Dash!

This year we will be supporting the 5km Santa Dash again! The event will take place in West Park on Sunday 3rd December. The photo to the right shows last years race, every green hat you can see if a member of our Christ Church 'Team Green'. The event raised more money than it had ever done before. This was due to the 70 plus entries via Christ Church!

The event is great fun and is a lovely way to start December!



Beacon have kindly said they will provide 'Team Green' with a discount code again this year and we will all have green hats again!

Please put the date in your diary and watch this space for the entry information and discount code!


Beacon
Santa Run
West Park
Wolverhampton
Sunday 3rd December 2023



Year 4 Trip to Bradford Estates

Year 4 enjoyed a fantastic trip to Bradford Estates this week where they learnt about agriculture and farming. The weather forecast was terrible but luck was on our side and we managed to stay dry for most of the day! Thank you to Mrs McWilliams and Miss Knowles for organising the trip!





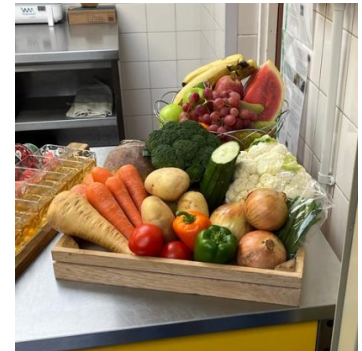
The staff at Bradford Estates commented that they couldn't believe the children were only year 4 as their conduct was exceptional. They listened with interest and respect to all the activity leaders. We were very proud of them. Well done year 4!

Thought of the Week

Theme– Harvest



Leviticus 23:22 “ When you reap the harvest of your land, do not reap to the very edges of your field or gather the gleanings of your harvest. Leave them for the poor and for the foreigner residing among you. I am the LORD your God. ' ”



The Library is Open for Parents Evening!

The library will be open on Monday and Tuesday next week until 5.45pm. If you would like to have a look in the library or check out a book for your child whilst waiting for your appointment, please feel free to pop down and see Mrs Walker!

Book Fair

The book Fair will be open in the Junior Hall on Monday and Tuesday next week after school.

The commission we get from the sales made at the Book Fair make a huge difference to our school library. Every year we are able to purchase a selection of new books to keep our library up to date for the children. Every book purchased makes a difference. We appreciate your support.

A promotional poster for a Scholastic Book Fair. The poster features the Scholastic and Travelling Books logos at the top. The main text says 'COME TO the BOOK FAIR!'. There are several book covers displayed with their prices: 'Tom Gates Stories' (Hardback only £7.99), 'Speak Up!' (£7.99), 'Oh! Maya Gods!' (£7.99), 'Dog Man' (Hardback only £9.99), 'Percy Jackson' (Great Deal only £2.99), 'The Baddies' (£7.99), and 'Bluey Barksy Boats' (£6.99). A cartoon character is sitting on a yellow chair reading a book. At the bottom, it says 'LAST YEAR YOUR SUPPORT HELPED DONATE £5.3M IN FREE BOOKS TO SCHOOLS NATIONWIDE'.

Happy Bonfire Night!

7TH NOVEMBER

**Bangers, Mash
& Baked Beans
OR
Veggie Bangers & Mash**

**WITH
Peas or Beans**

Rocket Lolly

**COME ALONG AND HAVE YOURSELVES A
SPARKLING LUNCH TIME!**



"READING IS A PASSPORT
TO COUNTLESS ADVENTURES."
- NEIL GAIMAN



**LIBRARY IS OPEN AFTER
SCHOOL THURSDAYS UNTIL 4PM
MRS WALKER WOULD LOVE TO
SEE YOU AND YOUR FAMILY**

FIRST VISIT

COLLECT YOUR BOOKMARK AND YOUR FIRST STICKER

GET A STICKER EVERY VISIT

EVERY 7 STICKERS YOU RECEIVE YOU GET A PRIZE.



THE WORLD
belongs
to
THOSE WHO
read

Flu immunisation for pupils in school years Reception - Year 11

DEAR PARENT/CARER,

The flu vaccine is being offered at your child's school again this autumn/winter.

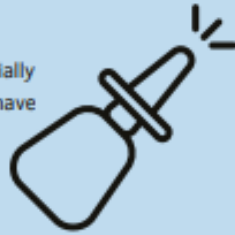
To give consent for your child to have the flu vaccine, please click here:

<https://midlands.schoolvaccination.uk/flu/2023/wolverhampton>

Even if you do not wish for your child to have the vaccine, please complete the online form so that we can record your wishes.

THE NASAL FLU VACCINE

- ✓ Protects your child from the flu.
- ✓ Protects your family and friends from the flu (especially those who are elderly, young babies, or those who have serious health conditions).
- ✓ Is painless, quick and effective.
- ✓ Is free



THE IM FLU VACCINE



We also offer the flu vaccine as an injection, which is **gelatine-free**. This *may* also be the vaccine of choice for vegans. Please go to our website where you can find out more about the manufacturing of the flu injection, and then decide if the injection is more suited to your child.

You only need to complete one consent form for each child. If you later change your mind, please call your local team. If your child has this immunisation elsewhere after you have submitted the consent form, you **MUST** inform Vaccination UK rather than the school.

We understand that you may have questions about the vaccine. For more information, please go to our website, where you can find a list of FAQ's, as well as details of our community catch up clinics. We also have some FAQ's enclosed below.

You can also find informational videos on our YouTube channel, including subtitled versions for other languages.

Yours Faithfully,
Your Local Immunisation Team
Vaccination UK



WOLVERHAMPTON
Immunisation Team
Contact Details



Wolverhampton@v-uk.co.uk



01902 200077

WORKING ON BEHALF OF



USEFUL INFO



We endeavour to come to your child's school twice. If they are absent or unable to be vaccinated at school, you will need to attend one of our community clinics for the vaccine. Details of these can be found on our website or you can contact the team above.



PLEASE NOTE the flu vaccine will **NOT** be available to otherwise healthy children after December 15th at all, and so we urge you to return the consent form as soon as possible in case we are not able to visit your child's schools for a second visit this year.



Your consent will remain in place for the entire flu season. If your child misses a first visit, you do not need to complete a second form.

USEFUL LINKS



www.schoolvaccination.uk/nasal-flu

www.youtube.com/@vaccinationuk



PRIVACY POLICY

Our 2023/24 policy can be viewed here:

www.schoolvaccination.uk/privacy-policy

For data protection queries, please contact:

dpo@vaccinationuk.co.uk



ADDITIONAL INFORMATION

*The consent form needs to be signed by a person with parental responsibility which includes:

- Mother: automatic
- Father: if married to the mother either when baby is born or marries subsequently
- Unmarried father: if name appears on birth certificate (since 1/12/03) or legally acquired
- Others: if parental responsibility is legally acquired
- Parental Responsibility Agreement: signed, properly witnessed and sent for registration to Principle Registry or the Family Division (High Court)
- Residence Order: granted by the Court

Please note that young people under the age of 16 can give or refuse consent if considered competent to do so by nursing staff.

FREQUENTLY ASKED QUESTIONS

Are there any side effects of the vaccine?

Possible side effects are: decreased appetite, headache, a runny or blocked nose, and sometimes a raised temperature. These are common, but they pass quickly and can be treated with paracetamol or ibuprofen if you feel your child needs it.

Are there any children who shouldn't have the nasal vaccine?

You should let us know if your child has any of the following:

- A very severe allergy to eggs, egg proteins, gentamicin or gelatine – it is important for us to know if your child has been admitted to hospital with a condition called anaphylaxis, triggered by these things.
- Are currently wheezy or have been wheezy in the past 72 hours with asthma. There is an alternative flu vaccine that we can talk to you about to ensure that your child is protected as soon as possible.
- Have a condition that severely weakens their immune system.

Also, children who have been vaccinated should avoid close contact with people with very severely weakened immune systems for around two weeks following vaccination (By severely weakened, we generally mean people who are isolating, such as those who have received some types of chemotherapy or people who have had a bone marrow transplant, for example). This is because there's an extremely remote chance that the vaccine virus may be passed to them.

Contact with other healthy children or adults does not need to be limited after having the vaccine.

We do not eat pork products.

Can my child have a different flu vaccine?

Yes. There is a flu vaccine available, in the form of an injection.

The nasal flu vaccine is the best vaccine for children and young people under 18 years of age as it is more effective at stopping the spread of flu and it is painless, but it does have a highly processed form of gelatine (porcine gelatine), which is used in a range of many essential medicines. The gelatine helps to keep the vaccine viruses stable so that the vaccine provides the best protection against flu.

If your faith or beliefs mean you would prefer a vaccine that has no pork (porcine gelatine) in it, please complete the consent for the flu injection only. You do not need to complete a form for both.

If your child is vegan, please note that the flu injection is a cell based vaccine. For more information, please see our FAQs page on our website:

<https://www.schoolvaccination.uk/nasal-flu>



Week One Menu

	MONDAY	TUESDAY	WEDNESDAY	THURSDAY	FRIDAY
MAIN MEAL	PORK SAUSAGE WITH MASHED POTATO & GRAVY	CHICKEN & SWEETCORN PASTA BAKE WITH WARM BAGUETTE	ROAST TURKEY WITH ROAST POTATOES & GRAVY	BEEF COTTAGE PIE & GRAVY	FISH FINGERS & CHIPS
VEGETARIAN	VEGAN QUORN CUMBERLAND SAUSAGE, MASH & GRAVY	MACARONI CHEESE & WARM BAGUETTE	ROAST QUORN FILLET WITH ROAST POTATOES & GRAVY	VEGETARIAN MINCE COTTAGE PIE & GRAVY	CHEESE & POTATO PIE
JACKET / DELI OFFER	JACKET POTATO Grated Cheese, Baked Beans or Tuna Mayo DELI OFFER Cheese, Egg Mayo, Tuna Mayo or Ham	JACKET POTATO Grated Cheese, Baked Beans or Tuna Mayo DELI OFFER Cheese, Egg Mayo, Tuna Mayo or Ham	JACKET POTATO Grated Cheese, Baked Beans or Tuna Mayo DELI OFFER Cheese, Egg Mayo, Tuna Mayo or Ham	JACKET POTATO Grated Cheese, Baked Beans or Tuna Mayo DELI OFFER Cheese, Egg Mayo, Tuna Mayo or Ham	JACKET POTATO Grated Cheese, Baked Beans or Tuna Mayo DELI OFFER Cheese, Egg Mayo, Tuna Mayo or Ham
SEASONAL VEGETABLES	SLICED CARROTS OR GARDEN PEAS	BROCCOLI OR MIXED GREEN SALAD	GREEN BEANS OR SLICED CARROTS	BROCCOLI OR SWEETCORN	GARDEN PEAS OR BAKED BEANS
DESSERTS	SHORTBREAD & APPLE SLICES	LEMON SPONGE & CUSTARD	ICE CREAM & PEACH SLICES	CHOCOLATE SPONGE & CUSTARD	FRUITY FRIDAY

AVAILABLE DAILY: Freshly Baked Wholemeal Bread, Fresh Salad Bar, Water, Seasonal Fresh Fruit, Yoghurt & Jelly.

YEAR 5: Panini Bar



Week Two Menu

	MONDAY	TUESDAY	WEDNESDAY	THURSDAY	FRIDAY
MAIN MEAL	PASTA WITH SAUSAGE IN A TOMATO SAUCE	CREAMY CHICKEN AND SWEETCORN PIE	ROAST CHICKEN ROAST POTATOES & GRAVY	BEEF CHILLI CON CARNE WITH FLUFFY RICE	FISH FINGERS & CHIPS
VEGETARIAN	PASTA WITH QUORN MEATBALLS IN A TOMATO SAUCE	CHEESE AND BAKED BEAN PUFF	ROAST QUORN FILLET, ROAST POTATOES & GRAVY	VEGETARIAN MINCE CHILLI CON CARNE WITH FLUFFY RICE	CHEESE & TOMATO PIZZA
JACKET / DELI OFFER	JACKET POTATO Grated Cheese, Baked Beans or Tuna Mayo DELI OFFER Cheese, Egg Mayo, Tuna Mayo or Ham	JACKET POTATO Grated Cheese, Baked Beans or Tuna Mayo DELI OFFER Cheese, Egg Mayo, Tuna Mayo or Ham	JACKET POTATO Grated Cheese, Baked Beans or Tuna Mayo DELI OFFER Cheese, Egg Mayo, Tuna Mayo or Ham	JACKET POTATO Grated Cheese, Baked Beans or Tuna Mayo DELI OFFER Cheese, Egg Mayo, Tuna Mayo or Ham	JACKET POTATO Grated Cheese, Baked Beans or Salmon Mayo DELI OFFER Cheese, Egg Mayo, Tuna Mayo or Ham
SEASONAL VEGETABLES	GARDEN PEAS OR SLICED CARROTS	SWEETCORN OR BROCCOLI	GREEN BEANS OR SLICED CARROTS	SWEETCORN OR SLICED CARROTS	GARDEN PEAS OR BAKED BEANS
DESSERTS	BANANA TRAYBAKE & CUSTARD	APPLE CRUMBLE & CUSTARD	SULTANA & OAT COOKIE WITH APPLE SLICES	CHOCOLATE COOKIE	FRUITY FRIDAY

AVAILABLE DAILY: Freshly Baked Wholemeal Bread, Fresh Salad Bar, Water, Seasonal Fresh Fruit, Yoghurt & Jelly.



Week Three Menu

	MONDAY	TUESDAY	WEDNESDAY	THURSDAY	FRIDAY
MAIN MEAL	COWBOY HOTPOT & MASHED POTATO	CHICKEN WITH PASTA AND A CHEES SAUCE TOPPING	ROAST CHICKEN & GRAVY WITH ROAST POTATOES	CHEESE, TOMATO & HAM PIZZA WITH POTATO WEDGES	FISH FINGERS & CHIPS
VEGETARIAN	QUORN COWBOY HOTPOT & MASHED POTATO	MACARONI CHEESE	VEGETABLE MINCE COBBLER & MASHED POTATOES	CHEESE & TOMATO PINWHEEL	PLANT BASED SAUSAGE ROLL & CHIPS
JACKET / DELI OFFER	JACKET POTATO Grated Cheese, Baked Beans or Tuna Mayo DELI OFFER Cheese, Egg Mayo, Tuna Mayo or Ham	JACKET POTATO Grated Cheese, Baked Beans or Tuna Mayo DELI OFFER Cheese, Egg Mayo, Tuna Mayo or Ham	JACKET POTATO Grated Cheese, Baked Beans or Tuna Mayo DELI OFFER Cheese, Egg Mayo, Tuna Mayo or Ham	JACKET POTATO Grated Cheese, Baked Beans or Tuna Mayo DELI OFFER Cheese, Egg Mayo, Tuna Mayo or Ham	JACKET POTATO Grated Cheese, Baked Beans or Tuna Mayo DELI OFFER Cheese, Egg Mayo, Tuna Mayo or Ham
SEASONAL VEGETABLE	SLICED CARROTS OR GARDEN PEAS	MIXED GREEN SALAD OR SWEETCORN	SLICED CARROTS OR GREEN BEANS	SWEETCORN OR BROCCOLI	GARDEN PEAS OR BAKED BEANS
DESSERTS	STRAWBERRY ICE CREAM & ORANGE SLICES	LEMON SPONGE & CUSTARD	FLAPJACK	CHOCOLATE BROWNIE & PEAR SEGMENT	FRUITY FRIDAY

AVAILABLE DAILY: Freshly Baked Wholemeal Bread, Fresh Salad Bar, Water, Seasonal Fresh Fruit, Yoghurt & Jelly.
YEAR 6: Panini Bar